



H O M E

FOX MARIN

2508-33 Sheppard Avenue East

Stunning Views

33 SHEPPARD AVE E, SUITE 2508



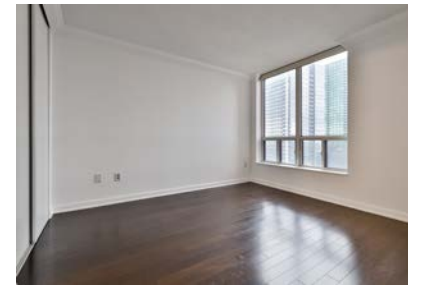
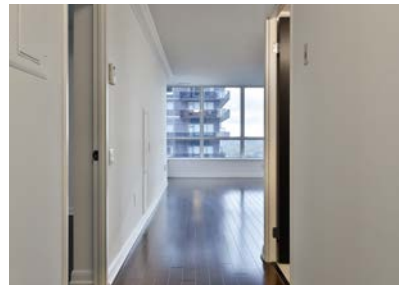
That feeling. When you're finally home. Effortlessly connected to it all. A unique corner suite featuring stunning views & rare triple exposure. A bright, spacious functional split plan — emptied, polished & freshly painted from top to bottom. Acclaimed Minto building with showstopper building amenities: 24 hr concierge, indoor pool, visitor parking, private garden & much more! Just 1 minute to Sheppard & Yonge Subway, 2 minutes to 401 & every neighbourhood hot spot you could need (or want)!



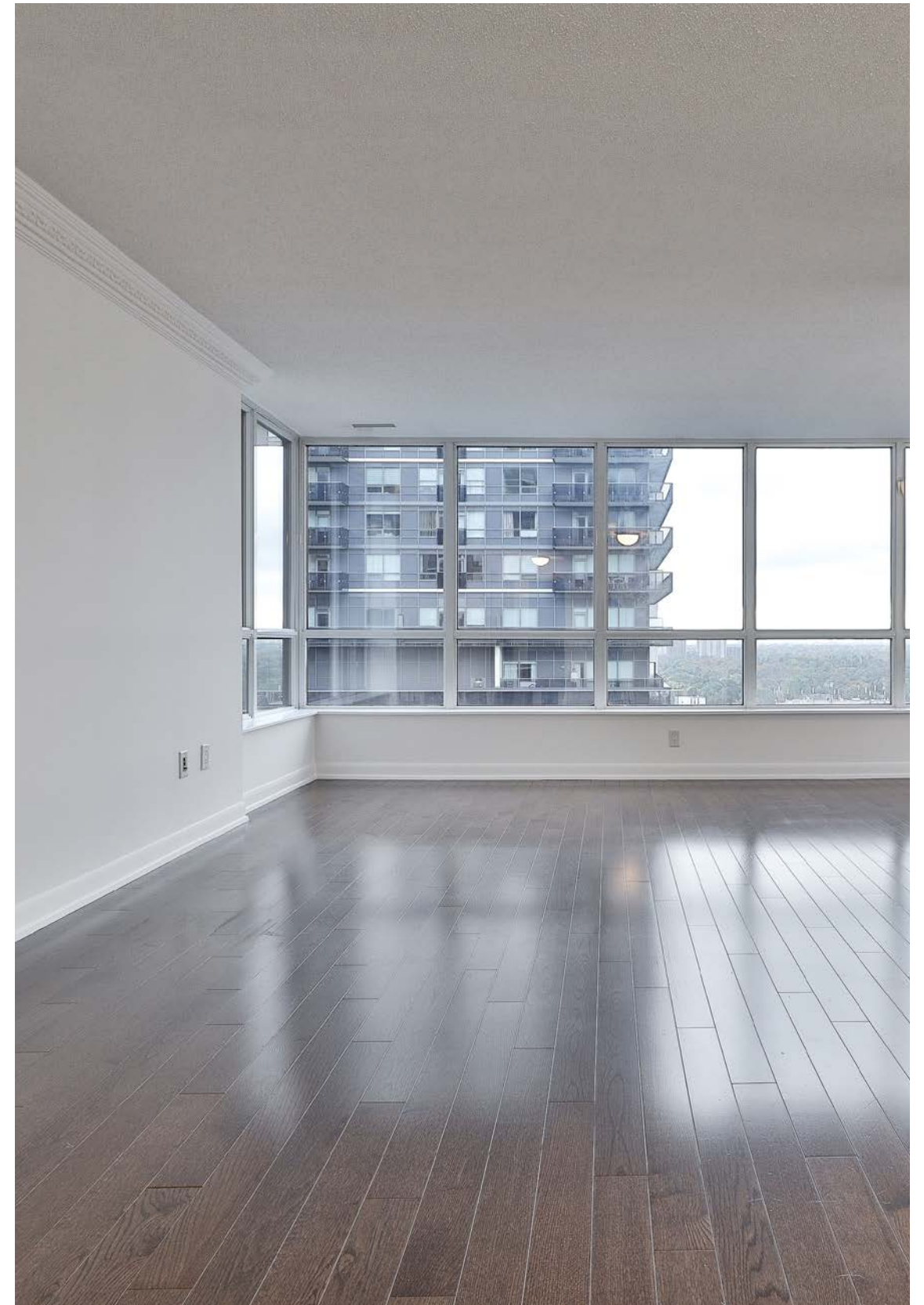


GALLERY

FOXMARIN.CA



May your walls
know joy; may each
room hold laughter;
and may every
window open to
great possibility.



- Yonge Street & Sheppard Avenue East
- Minto Gardens
- Two Bedrooms
- Two Washrooms
- 1 underground parking space
- North Western Exposure
- Interior Square Feet: 975
- Exterior Square Feet: 84
- Maintenance Fee: \$738.77
- Property Taxes: \$2,897.00/2020
- Listed Price: \$798,000

—

The Building

- Minto Gardens
- Developer: Minto
- Number of Storeys: 34
- Total Number of Suites: 337
- Year Built: 2005
- Property Management: Blanchard Management Inc.
- Amenities: Full state of the art gym, large swimming pool, brand new hot tub, sauna, movie theatre room. Outdoor, award winning, Muskoka-inspired backyard. Piano in the lobby. Library/kids play room. Games/Billiard/Ping Pong room. 2 Party Rooms. Swimming pool area was just renovated two years ago at a cost of over \$500k. All common areas were upgraded/renovated 4 years ago with new carpets, painted doors, marble elevator lobbies, renovated elevator interiors.

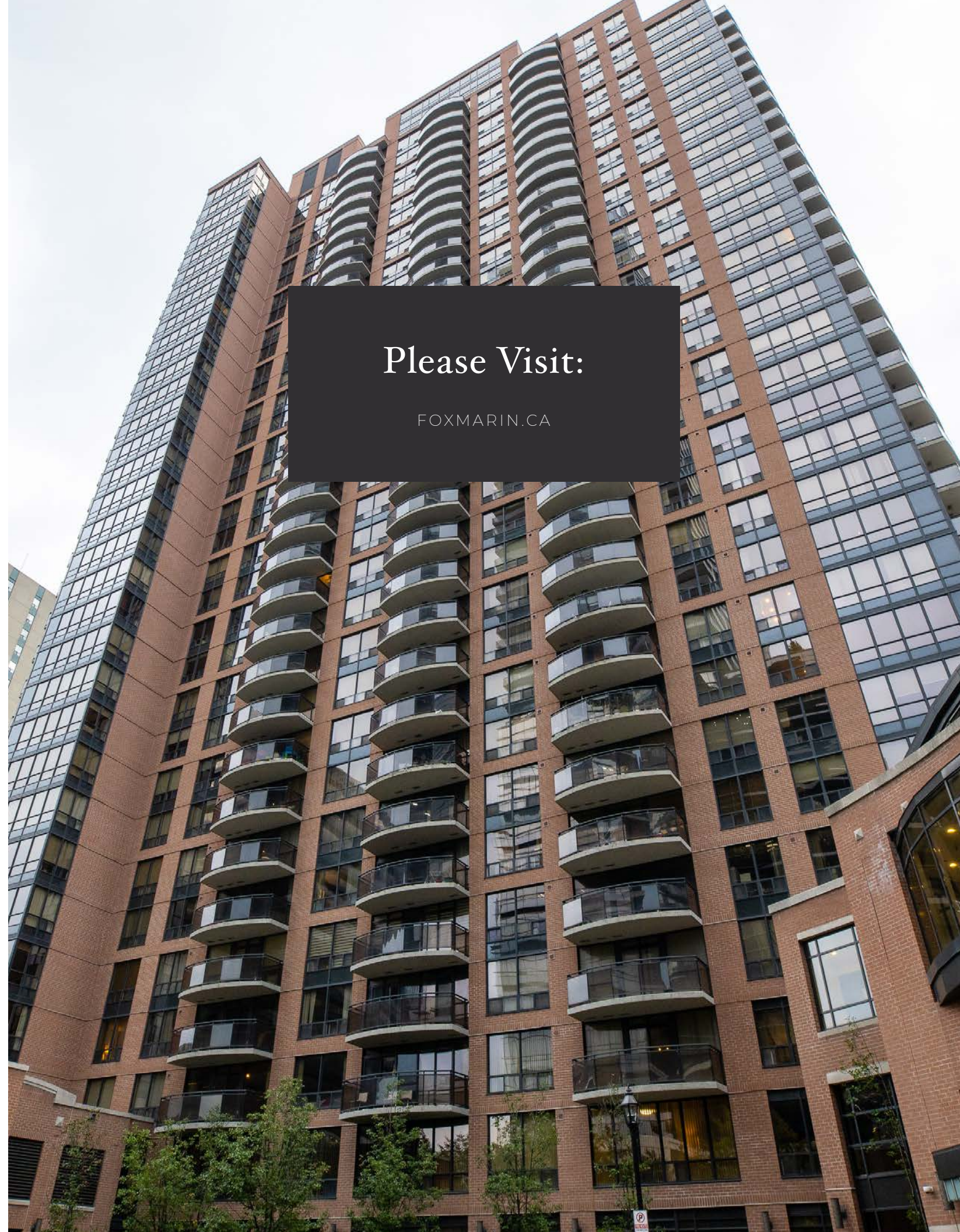
—

Inclusions:

Washer, dryer, stove, fridge, dishwasher, microwave, hood fan, all light fixtures, window coverings/blinds.







Please Visit:

[FOXMARIN.CA](https://foxmarin.ca)



FOX MARIN

Let's Connect

Ian Busher, *Broker*

ian@foxmarin.ca | 416 788 1344

Sage – Fox Marin Associates Ltd., Brokerage | *Independently Owned and Operated*