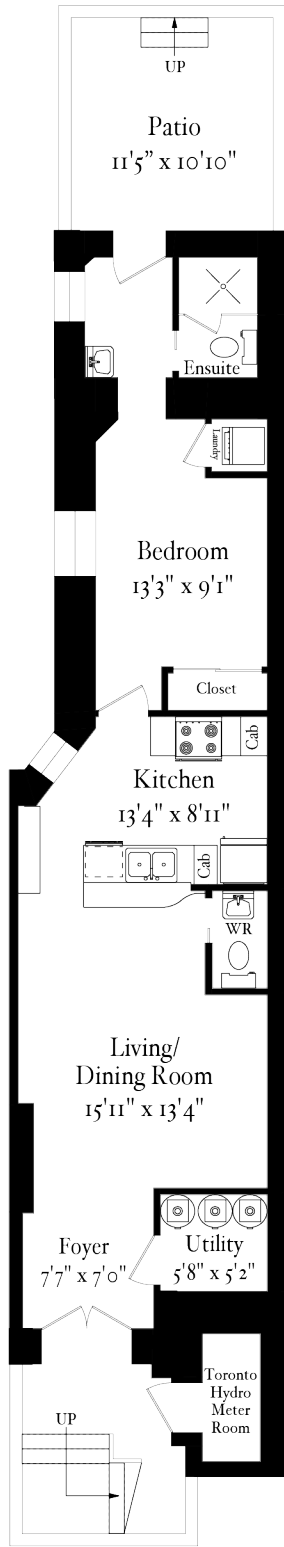
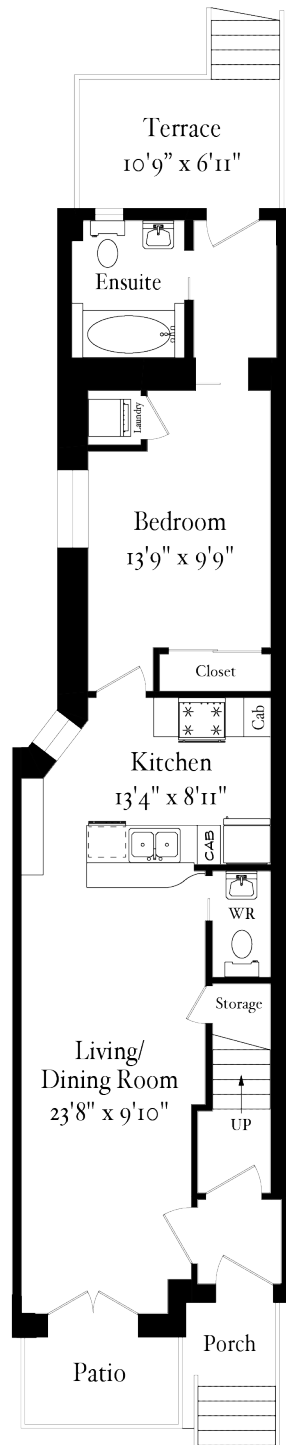


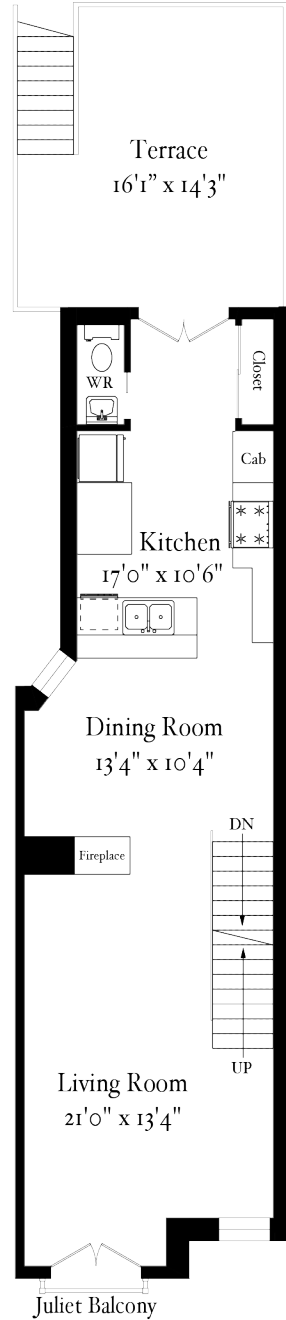
62 Dovercourt Road



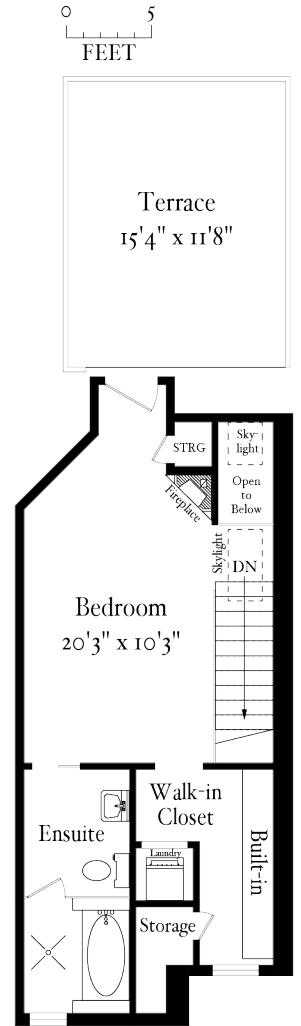
Lower Level - Apartment 3
809 Square Feet



Main Floor - Apartment 2
802 Square Feet



Second Floor
698 Square Feet



Third Floor
458 Square Feet

Apartment 1
Total 1,156 Square Feet

KORI MARIN, Managing Partner, Broker
RALPH FOX, Managing Partner, Broker of Record
 Sage - Fox Marin Associates Ltd., Brokerage | Independently owned and operated | FoxMarin.ca

This floor plan is should be considered approximate and for illustrative purposes only. Not intended to solicit Sellers or Buyers under contract.

