

H O M E



FOX MARIN

Love Hard & Fall Faster



A classic Lower East Side apartment indexed by clean lines, cozy creature comforts & contemporary sensibilities. An inviting space for real-life & real living. This generous split two-bedroom, two washroom plan solicits beautiful light with a show-stopper kitchen & breakfast bar, infinite storage, dreamy gallery walls and well-appointed rooms. Meticulously maintained and tucked away in one of downtown East's most amenity stacked Tridel builds. An urban residence for city aficionados drawn to the unassuming. A 1,000 square feet of Toronto magic - will you love hard or fall faster (or perhaps both)?

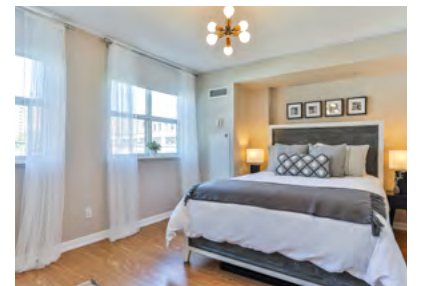




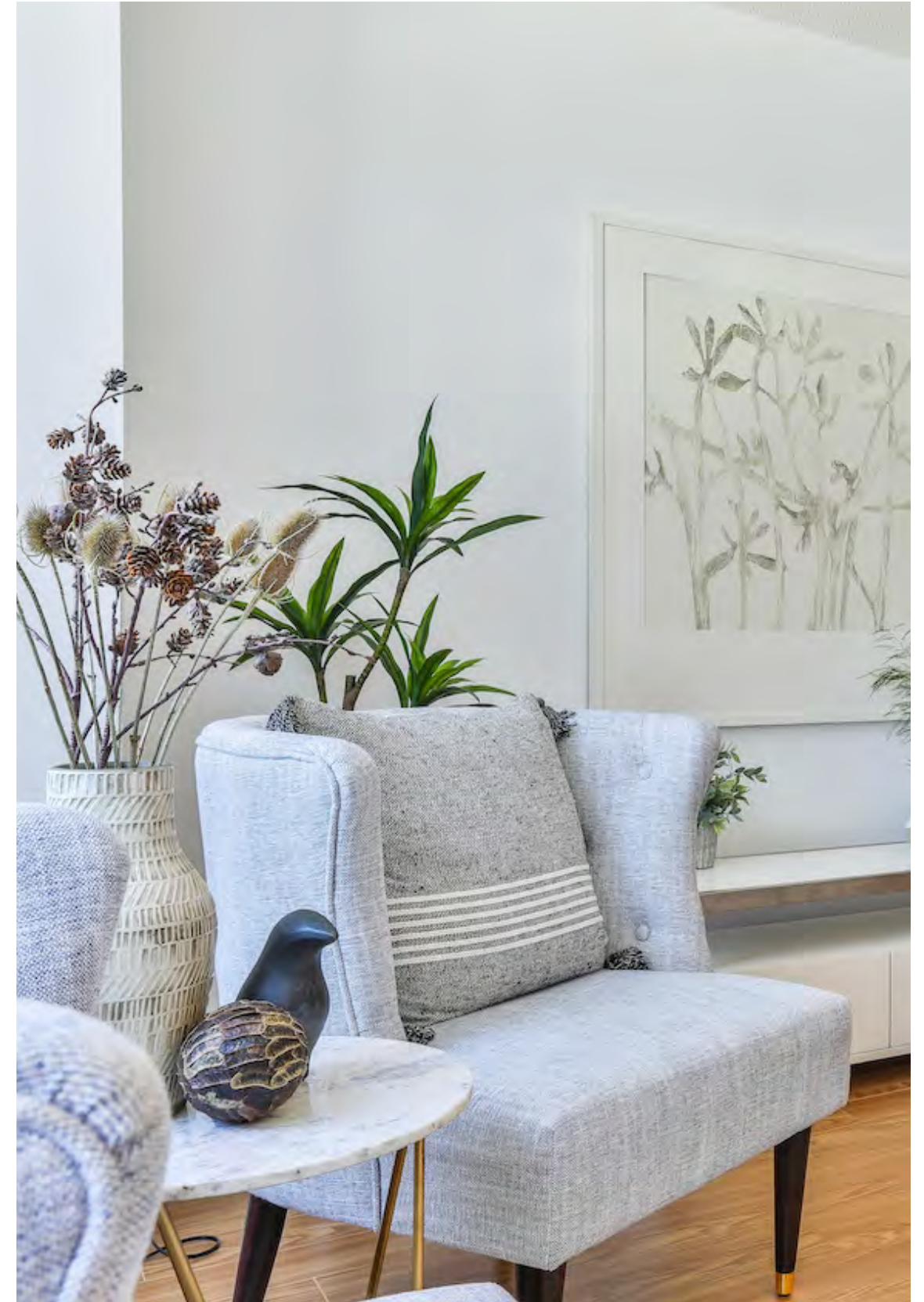


GALLERY

FOXMARIN.CA



May your walls
know joy; may
each room
hold laughter;
and may every
window open to
great possibility.



Lower East Side's Moss Park

Richmond St. East & Sherbourne

Interior: 1090 Square Feet

North Facing Balcony

Bedrooms: Two

Washrooms: Two

One Underground Parking Space

Maintenance Fees: \$833.88 (inclusive of utilities)

Property Taxes: \$3,207.82

MLS Reference: C5470629

–

Inclusions:

Stainless Steel Fridge

Stainless Steel Dishwasher

Stainless Steel Induction Stove Top, Oven & Hood Fan

Clothing Washer & Dyer

Outdoor Green Wall & Tile Decking

All Curtain Rods

Closet Built-ins

–

The Building:

Developer: Tridel

Number of Storeys: 15

Number of Suites: 497

Year Built: 2001

Property Management: Del Property Management

–

Amenities

24 Hour Concierge

Fitness Room

Roof Top Deck & Garden with BBQ's & Firepit

Sauna

Indoor & Outdoor Hot Tubs

Party, Media Room

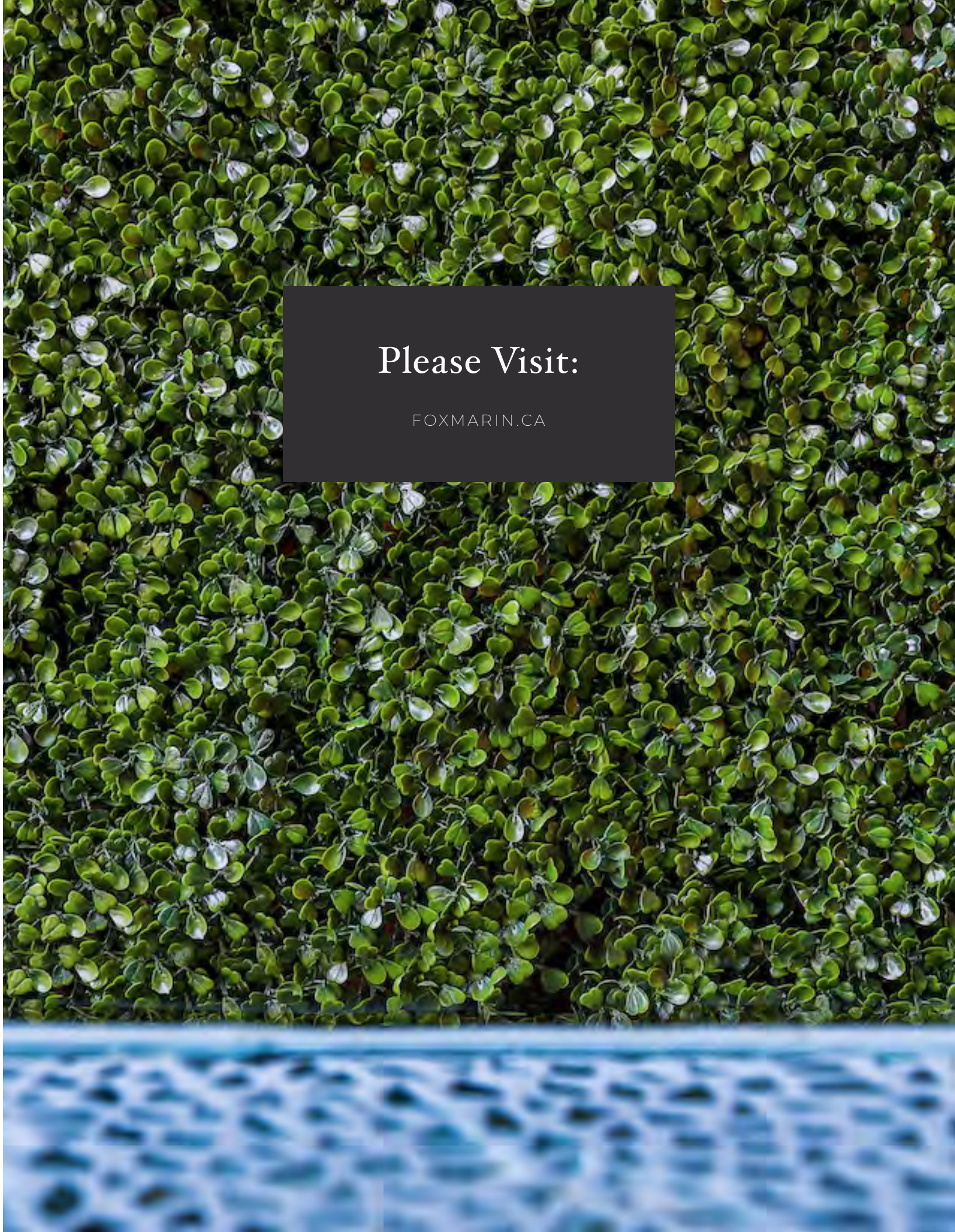
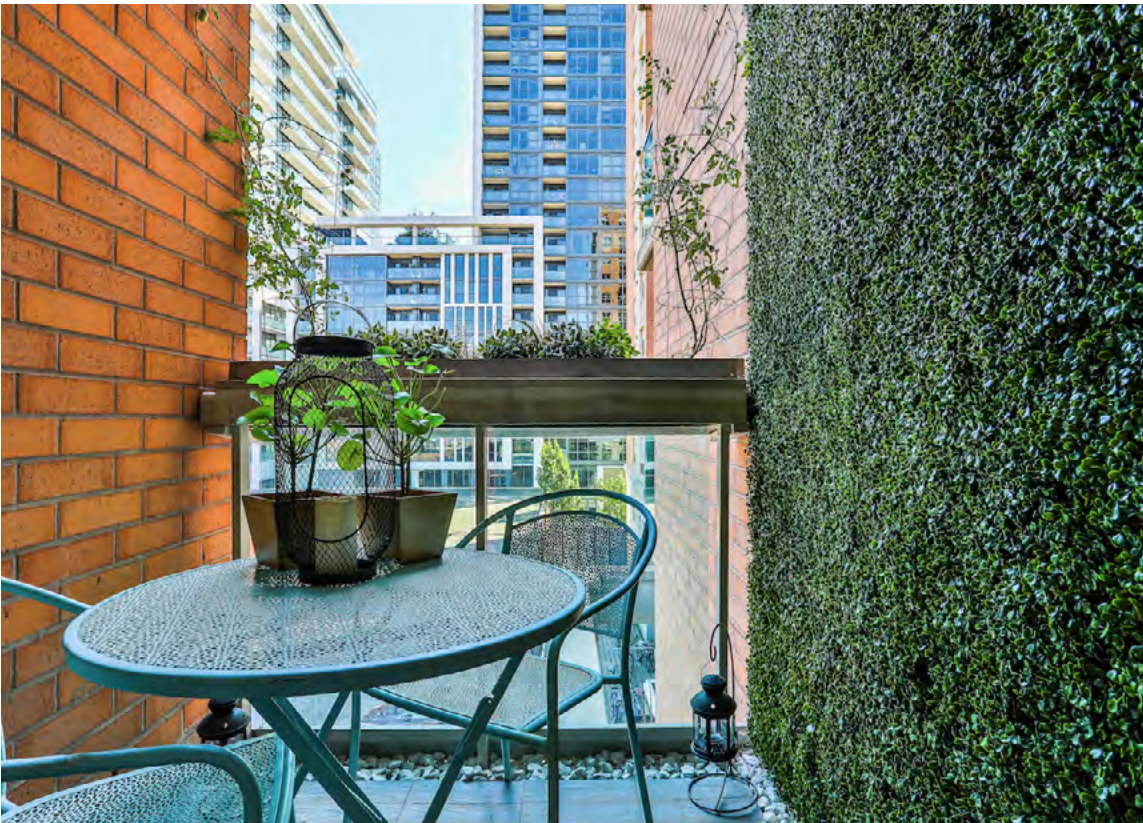
Basketball Court

Visitor Parking

Bike Storage









FOX MARIN

Let's Connect

Ralph Fox, *Broker Of Record, Managing Partner*

Kori Marin, *Broker, Managing Partner*

hello@foxmarin.ca | 416 322 5000

Sage – Fox Marin Associates Ltd., Brokerage | *Independently Owned and Operated*