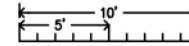
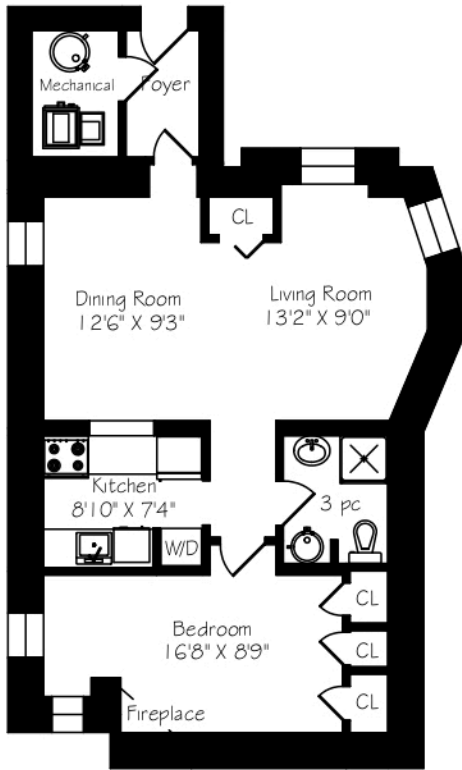


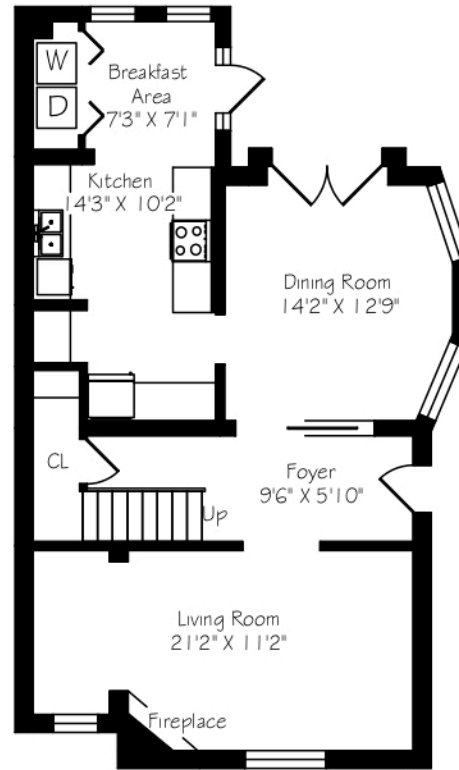
216 Rusholme Street



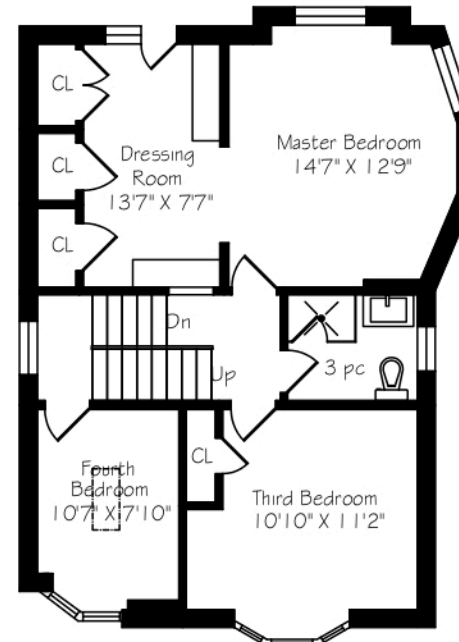
Measurements and Calculations are approximate  
To be used as guidelines only  
www.measuredup.ca



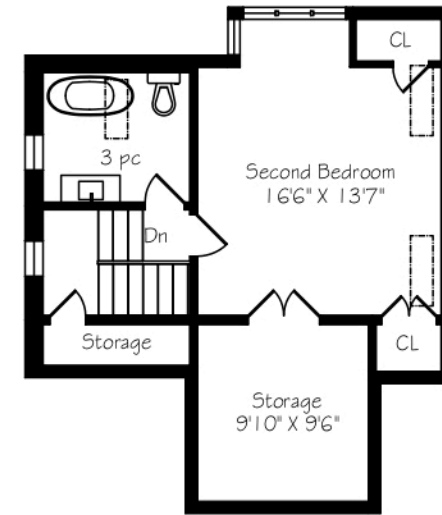
Unit 2 - Lower Level  
909 Square Feet



Unit 1 - Main Floor  
909 Square Feet



Unit 1 - Second Floor  
807 Square Feet



Unit 1 - Third Floor  
549 Square Feet

Total Above Grade - 2265 Square Feet

Total - 3174 Square Feet