

Sweet & Savoury

230 KING STREET EAST SUITE 1724



FM



DETAILS

Sweet & Savoury

Expect your heart to skip a beat for this lovable east end retreat tucked away at the crossroads of sweet & savoury. A real-estate nugget for first-timers, investors and wealth builders alike! This bright & brilliant plan is quick to the draw - adaptable, functional and irresistibly good-humoured. Kingly particulars include flexibility, versatility, a practical & cheerful kitchen, white & unblemished walls, delightful storage, and that beloved east-facing exposure & outdoor space to compliment! A matchless opportunity for our sovereign kings & queens seeking their icing (and the cake too)!





ABOUT THE RESIDENCE

The Essentials:

Moss Park Neighbourhood
Sherbourne St & King St E
530 Interior Square Feet
East Facing Balcony
One Bedroom
One Washroom
One Underground Parking Space
One Storage Locker
Maintenance Fees: \$538.14
Property Taxes: \$2,089.67 (2021)
MLS Reference: C5553138

INCLUSIONS

Stainless Steel Refrigerator
Stainless Steel Stove & Glass Cooktop
Stainless Steel Hood Vent
Stainless Steel Dishwasher
Clothing Washer & Dryer
Window Coverings
Electrical Light Fixtures (see exceptions)

EXCLUSIONS

Light Fixture in Living Room
Deck Tiles

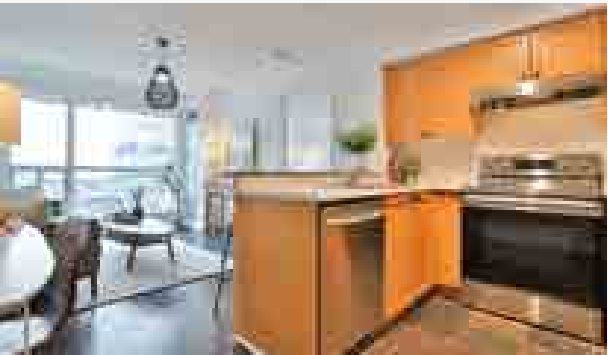
THE BUILDING

Developer: Camrost Felcorp
Number of Storeys: 17
Number of Suites: 332
Year Built: 2005
Property Management: Crossbridge Condominium Services

AMENITIES

Gym
Rooftop Deck
Concierge
Party Room
Guest Suites
Security System
Security Guard
Sauna
Visitor Parking





May your walls
know joy; may
each room hold
laughter; and may
every window open
to great possibility.



The Gallery:





Please Visit:

FOXMARIN.CA





FOX MARIN

Ralph Fox
FOUNDER, BROKER OF RECORD

Kori Marin
FOUNDER, BROKER

Fox Marin Associates
SAGE - FOX MARIN ASSOCIATES LTD., BROKERAGE
Independently owned and operated
2010 Yonge Street, Toronto, Ontario M4S 1Z9

hello@foxmarin.ca
foxmarin.ca