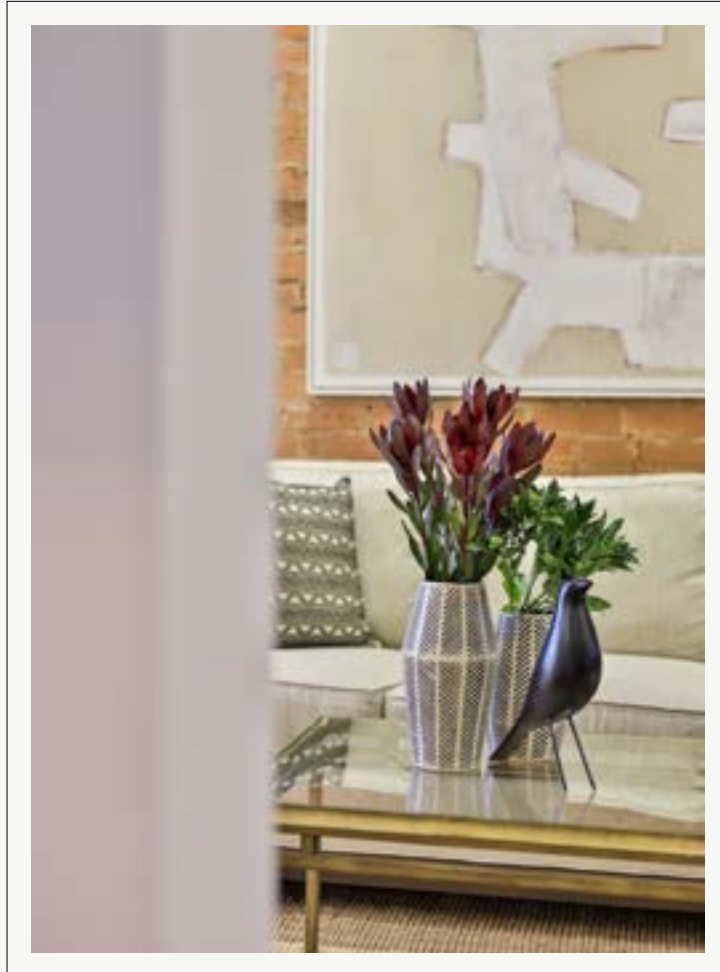


Shunning the Expected

66 ANNETTE STREET



FM



DETAILS

From Epochal Elegance to Present-Day Prestige:

An exquisite blend of age-old craftsmanship with innovative design, signalling unapologetic audacity & unparalleled distinction. Rooted in 1871, this Junction residence, stretching over 1,900 square feet, marries the architectural brilliance of a bygone era with the spirited nuances of today. Where once the airs of the Victorian age held sway, a contemporary reimagining breaks through.

A stone's throw away, The Junction vibrates with the ease of city life. The proximity to the much-acclaimed Saturday farmers market, the welcoming smiles of neighbours, and the communal joy of backyard alley parties all serve as a testament to the festive spirit of the community. Young families infuse the neighbourhood with fresh energy, ensuring that the legacy of this locale thrives for generations to come! A residence? Certainly. But also a piece of Toronto's architectural tapestry, a once-in-a-lifetime chance for the discerning to own a slice of history while dabbling in the good life!



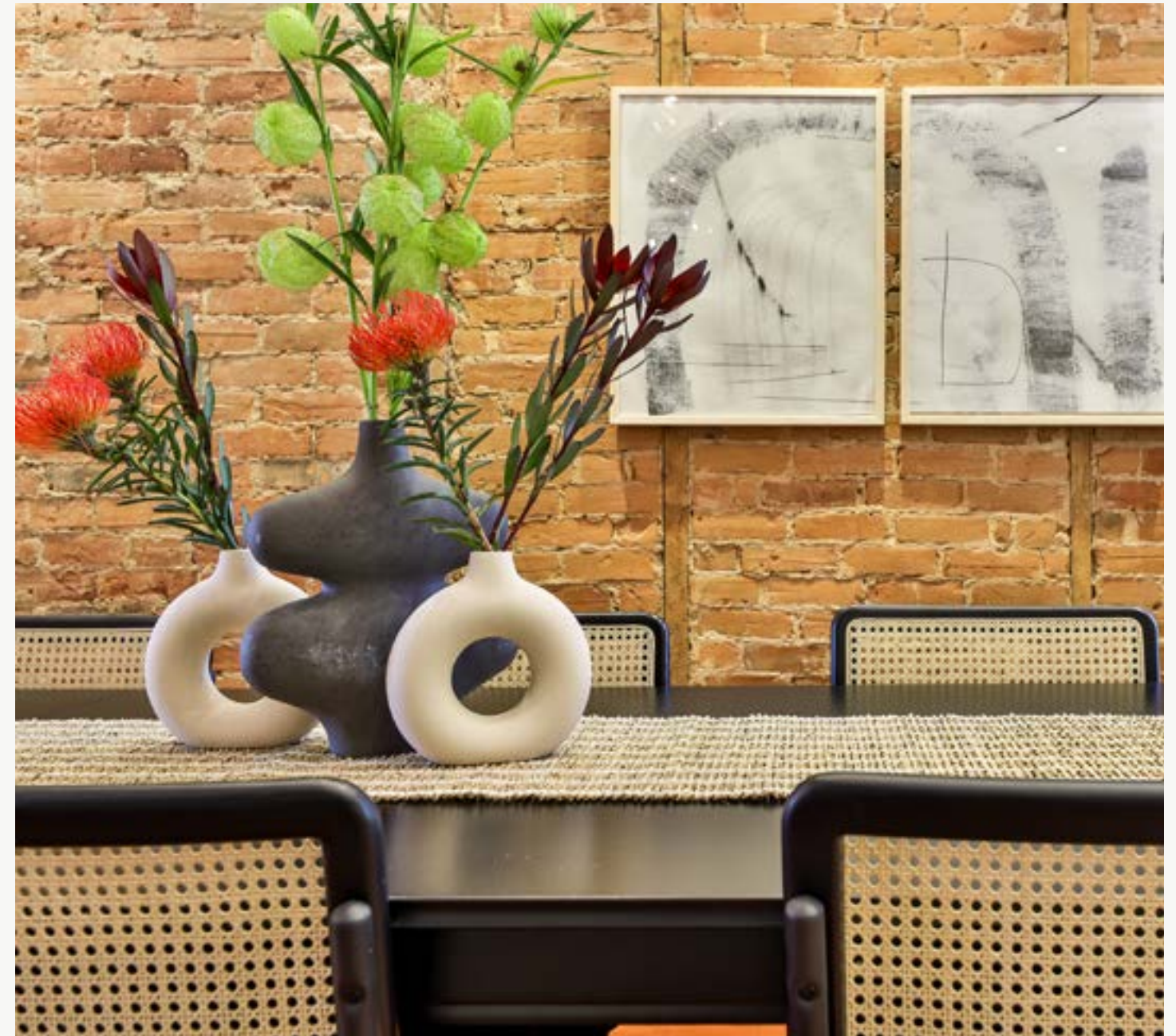


About the Residence:

The home shuns the expected, replacing antiquated formalities with an inviting, fluid modernity. On the main floor, an expansive artistic space beckons, including the 20-foot-high atrium, drawing inspiration from Moroccan design juxtaposed against century-old brick & Brazilian hardwood flooring. An artful glassed-in staircase adds architectural interest while maintaining a light & bright atmosphere. Step into the kitchen, the home's gastronomic heart, the true entertainer's dream, and be dazzled by clean surfaces, plentiful cabinetry & airy spaces - sunlight streams in through the avant-garde garage-style rolling door, creating a luminescent ambience over a flexible space calling for fitness enthusiasts, yogis, meditators or artists alike. Venture further to the upper floors to discover design marvels: hotel-inspired chambers, spa-indulgent bathrooms, rich tile selections & integrated wardrobes that merge utility, sophistication & luxury. And for those who seek solitude or an enclave for remote work, the second floor houses a discreet guest suite or a private office, augmented by hidden artisanal millwork and an exclusive backyard refuge. Descend to the lower level and unearth a versatile recreation space calling for wine or art collectors seeking a protected reprieve for their side-hustle loves. Anchoring itself in the present yet reverent of its storied past, this one-of-a-kind home evokes a duality that's inspired, warm and welcoming.



In Toronto's bustling west end, The Junction stands out as a testament to urban reinvention. Once dominated by brick factories and warehouses, this area now teems with life, gracefully evolving into a haven for artisans, entrepreneurs, and families. Its brick-lined streets have stories of old, but its current narrative is one of vibrant growth and cultural fusion. The culinary landscape of The Junction is as eclectic as its inhabitants. Farm-to-table bistros like The Beet Organic Café, Farmhouse Tavern and Noda Junction sit comfortably beside trendy taco haunts like Playa Cabana Cantina or Koji Japanese. And for those whose preferences lean toward the artisanal, the Junction Fromagerie's hand-selected cheeses will never disappoint, and you should never skip a visit to the Butternut Baking Co on Dundas West. But it's not just the eateries that make this enclave shimmer in the morning light. Coffee aficionados can get their caffeine fix from local treasures like Crema Coffee Co., known for its aromatic brews, or find solace in the charm of Full Stop Cafe or Full Stop Coffee. And for those who like their weekends fresh and organic, the Saturday Farmer's Market is not just a place to shop—it's an experience. This bustling market, ripe with the freshest produce and artisan goods, offers a sensory journey and connects the community. The essence of health and well-being thrives in The Junction. Traditional gyms share the streetscape with serene yoga studios and avant-garde fitness hubs like West Toronto CrossFit, Soul Fuel Fitness and The Body Engineers. The wellness journey here goes beyond the physical; numerous holistic centres dot the neighbourhood, offering everything from massage therapy to meditation sessions. Greenery, nature and dog parks, too, find their rightful place amidst this urban hot spot. With its 400 acres of verdant landscapes, High Park beckons those seeking outdoor activities, including hiking trails, sports facilities and picnic areas. Meanwhile, Perth Square or Baird Park offers a quaint respite for those sunny afternoon lounging sessions or an outdoor lunch break with your best canine friend. Connectivity remains one of The Junction's unsung strengths. With the Keele and Dundas West subway stations close at hand and a network of buses and streetcars at one's beck and call, traversing the city or venturing beyond becomes seamless, especially with the Bloor GO Station, Gardiner Expressway and Black Creek Drive all nearby!

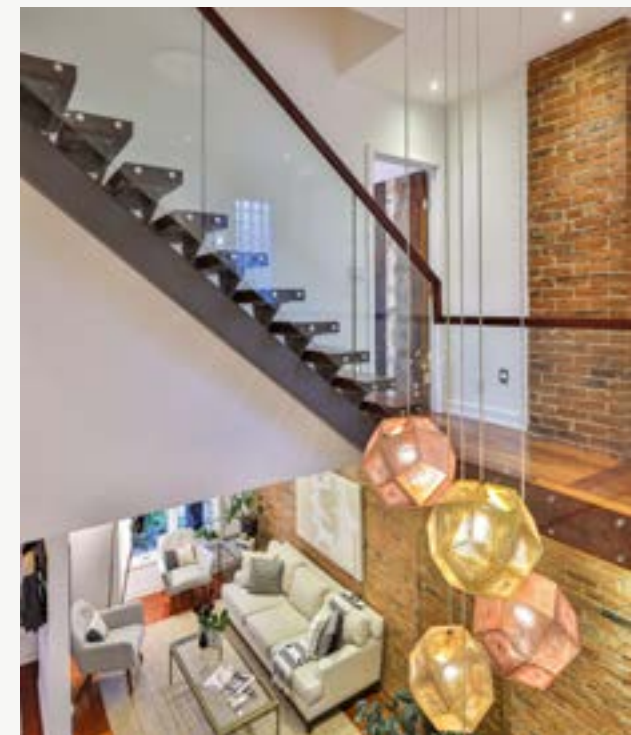




May your walls
know joy; may
each room hold
laughter; and may
every window open
to great possibility.



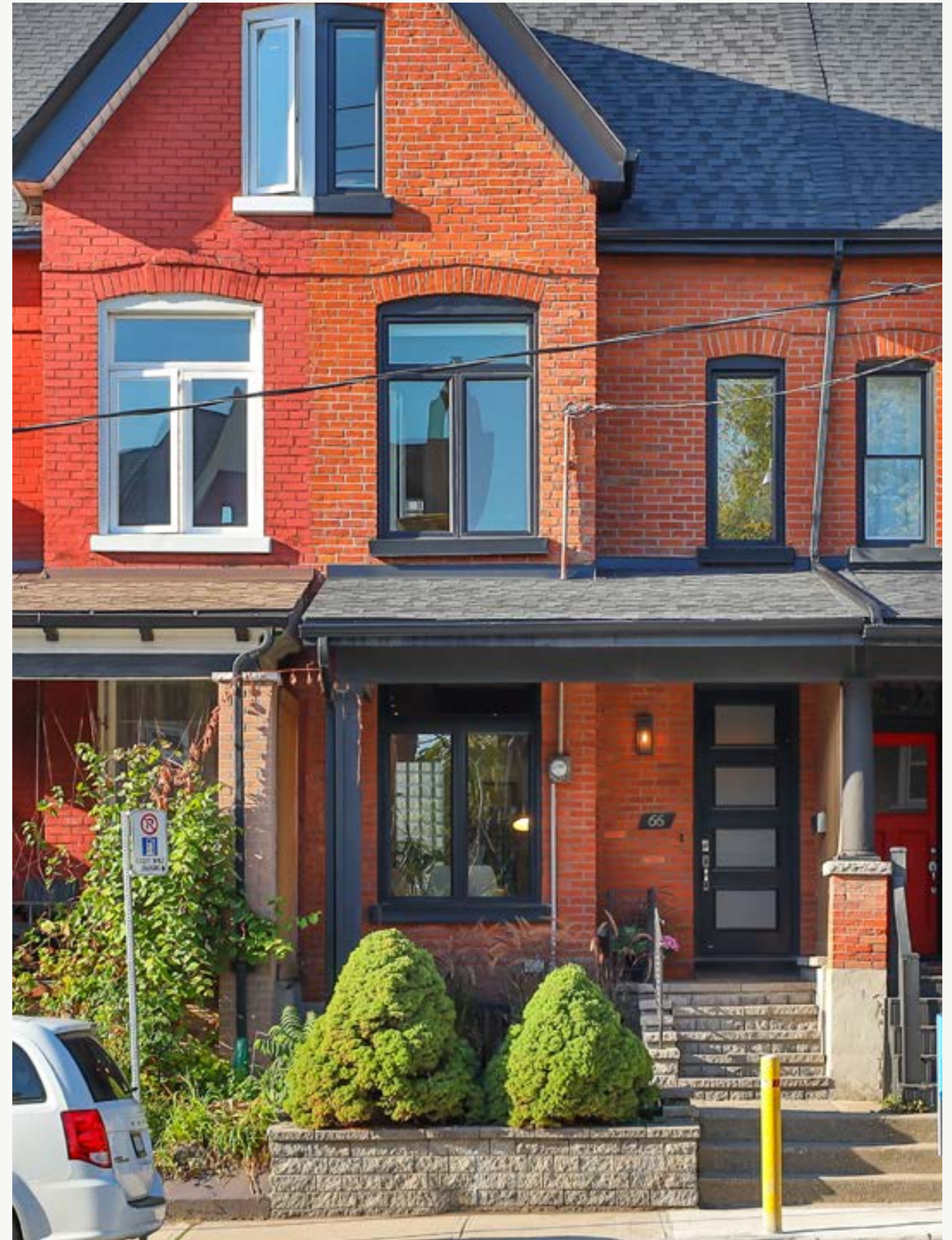
The Gallery:





Please Visit:

FOXMARIN.CA





FOX MARIN

Ian Busher
BROKER

Ralph Fox
FOUNDER, BROKER OF RECORD

Fox Marin Associates Ltd., Brokerage
Independently Owned and Operated
489 College Street, Suite 305, Toronto, Ontario M6G 1A5

hello@foxmarin.ca
foxmarin.ca
416.322.5000