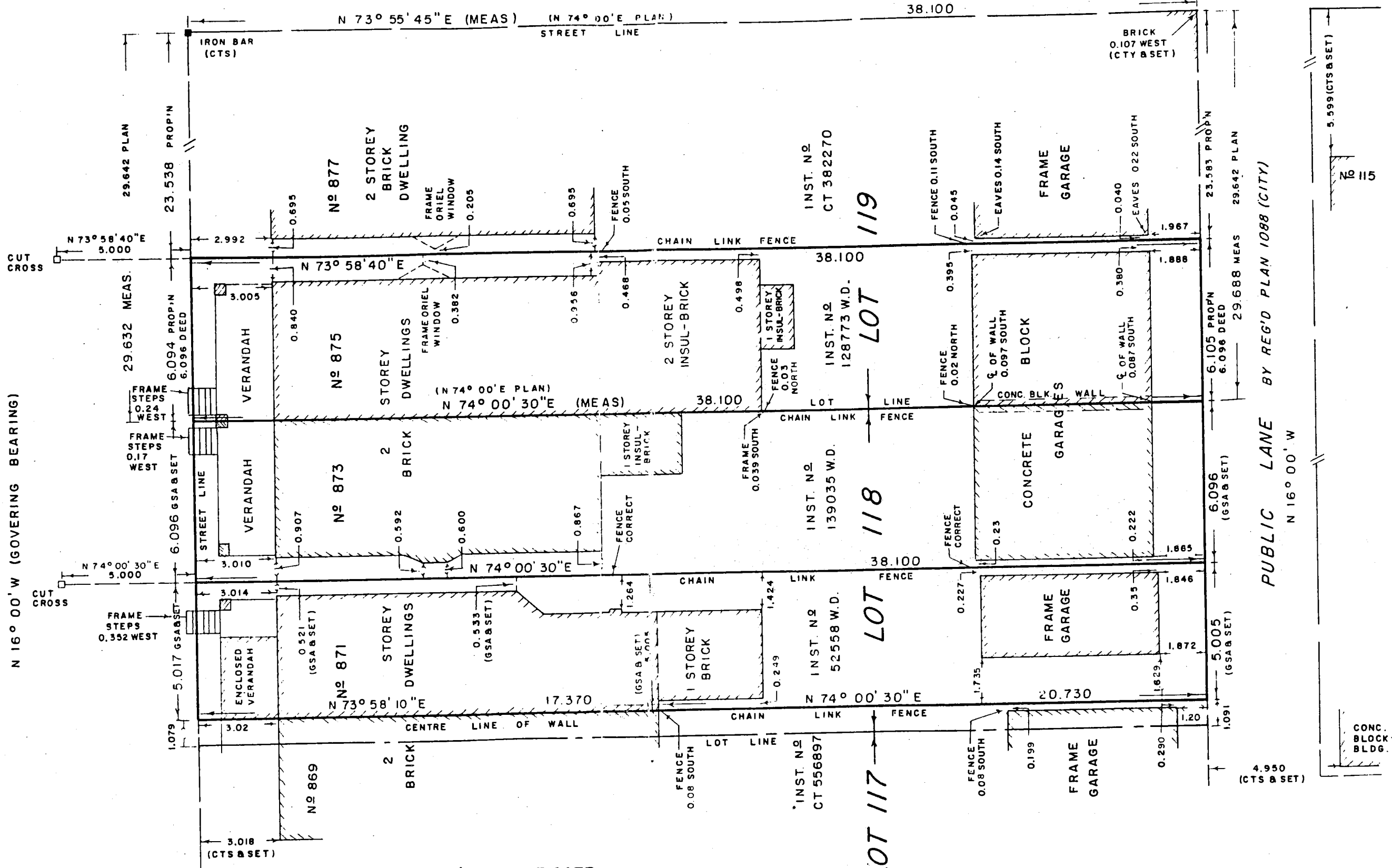


SHAW STREET

N 16° 00' W (GOVERNING BEARING)

PENDRITH STREET



NOTES:
 GSA. DENOTES G.S. ABBREY O.L.S.
 C.T.S. " CITY OF TORONTO SURVEYS

SURVEYOR'S CERTIFICATE
 I CERTIFY THAT:
 THE FIELD SURVEY REPRESENTED ON THIS PLAN WAS
 COMPLETED ON THE 17th DAY OF JUNE 1983.
 DATED: JUNE 21, 1983 *P. J. Holding*
 P.T. HOLDING
 ONTARIO LAND SURVEYOR

HOLDING & JONES LIMITED
 Ontario Land Surveyors
 2205 Victoria Park Avenue
 SCARBOROUGH, ONTARIO M1R-1V8
 (416) 447-9414
 445-3800