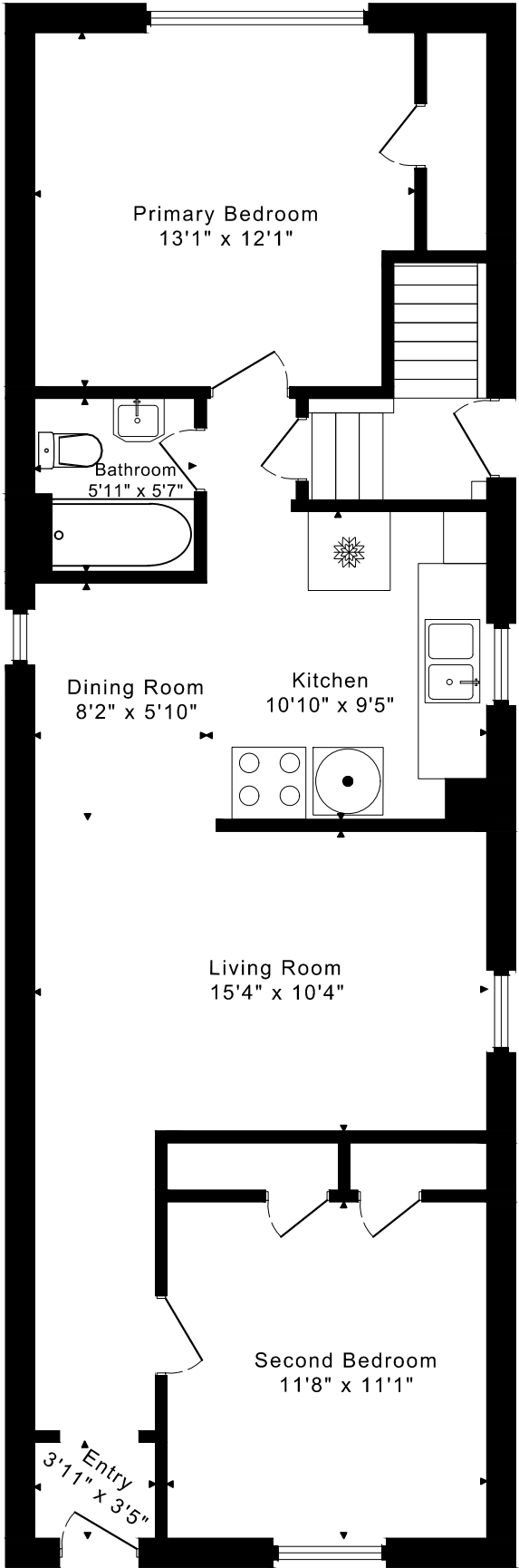
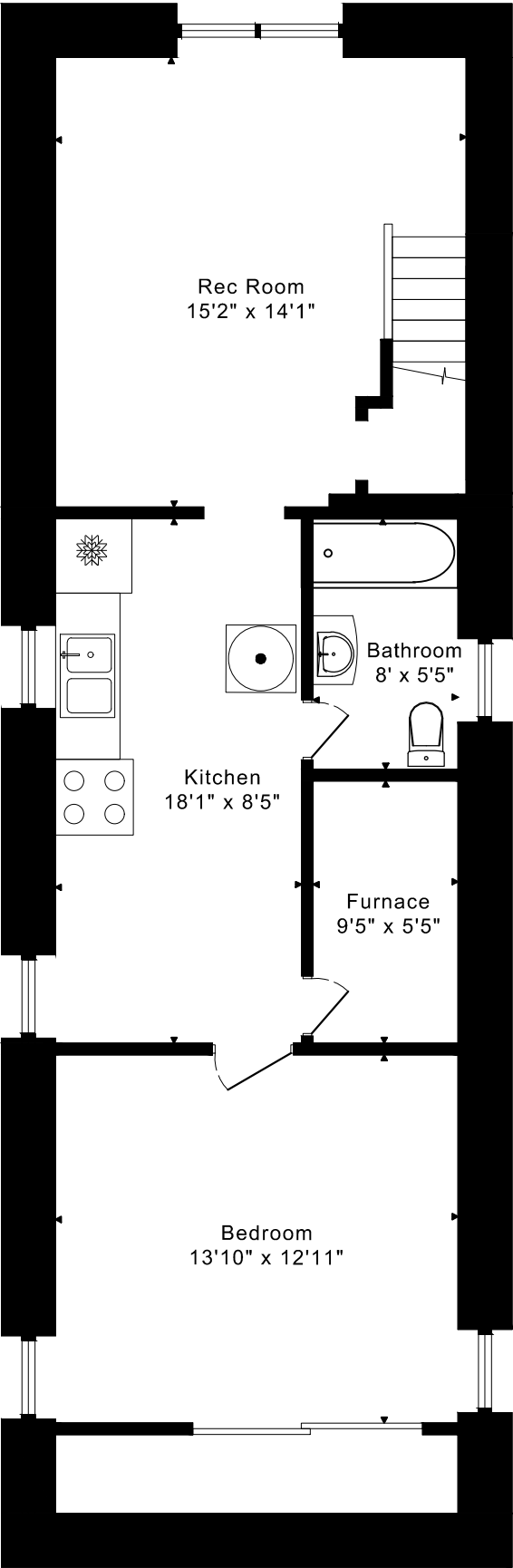


279 CEDARVALE AVENUE FLOOR PLANS



MAIN FLOOR
915 SQUARE FEET

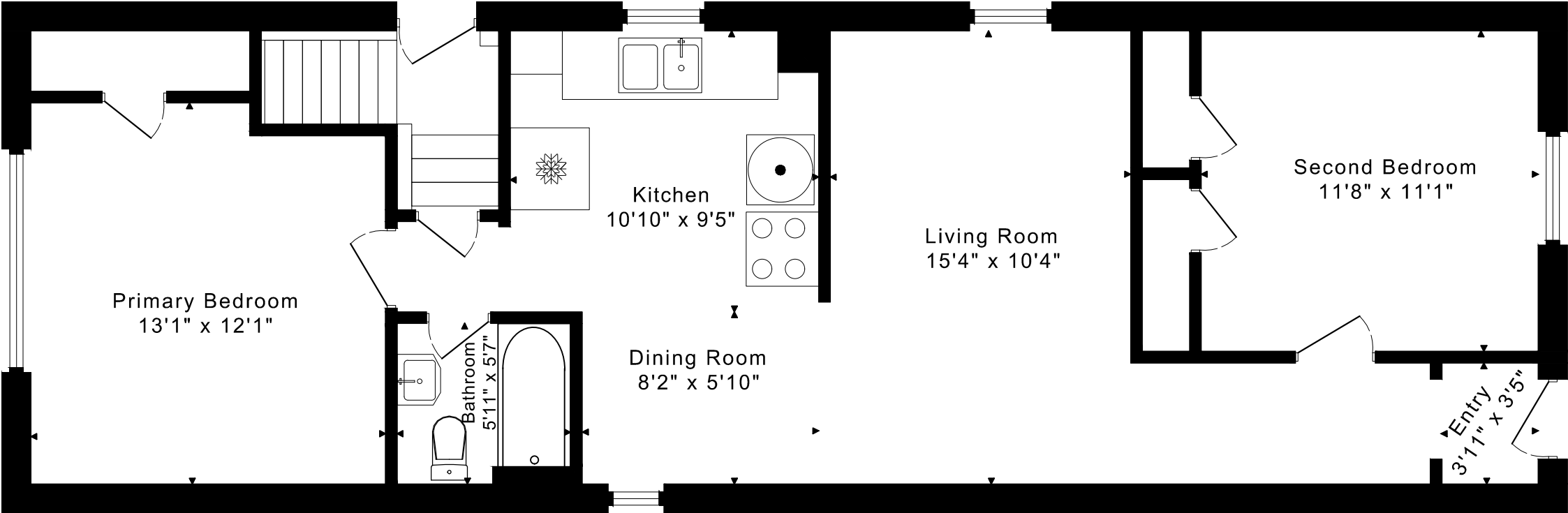


LOWER FLOOR
915 SQUARE FEET

915 sq ft + 915 sq ft
BELOW GRADE

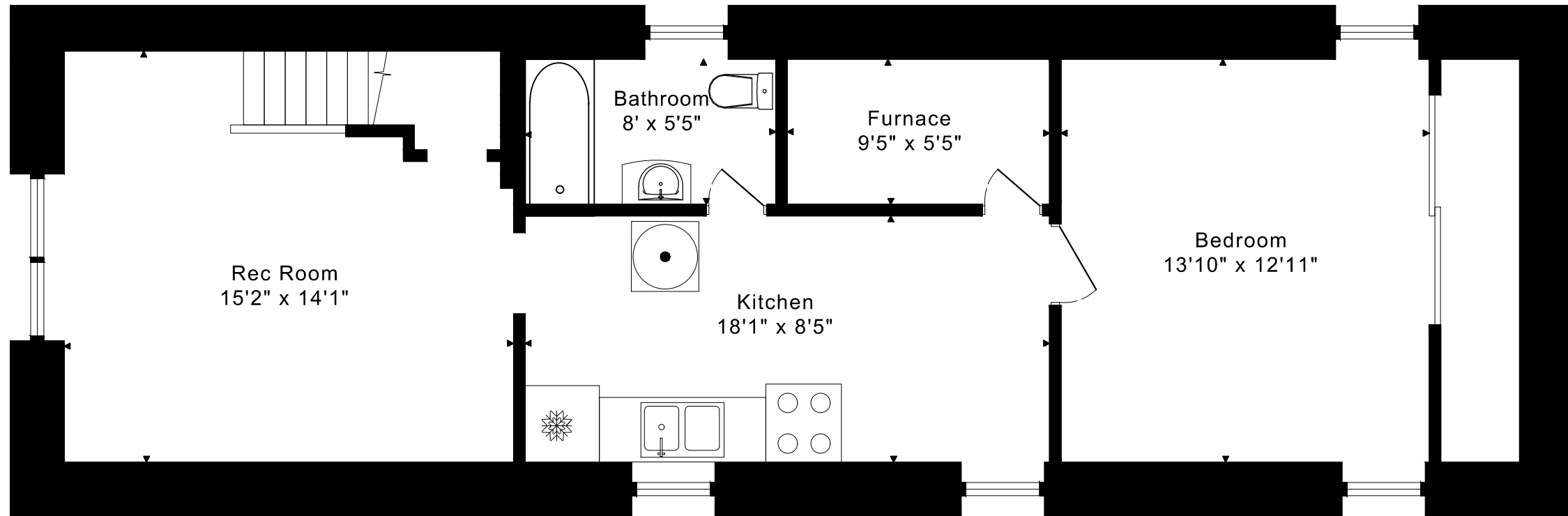
279 CEDARVALE AVENUE FLOOR PLANS

MAIN FLOOR 915 SQUARE FEET



279 CEDARVALE AVENUE FLOOR PLANS

LOWER FLOOR 915 SQUARE FEET



279 CEDARVALE AVENUE ROOM MEASUREMENTS

Floor	Room	Imperial				Metric [m]	
		Length		Width		Length	Width
		Feet	Inches	Feet	Inches		
Main	Entry	3	11	3	5	1,19	1,04
	Living Room	15	4	10	4	4,67	3,15
	Dining Room	8	2	5	10	2,49	1,78
	Kitchen	10	10	9	5	3,30	2,87
	Primary Bedroom	13	1	12	1	3,99	3,68
	Bathroom	5	11	5	7	1,80	1,70
	Second Bedroom	11	8	11	1	3,56	3,38
Lower	Rec Room	15	2	14	1	4,62	4,29
	Kitchen	18	1	8	5	5,51	2,57
	Bedroom	13	10	12	11	4,22	3,94
	Furnace	9	5	5	5	2,87	1,65
	Bathroom	8	0	5	5	2,44	1,65

CAPTURED ON: 2 OCT 2024
 DIMENSIONS ARE APPROXIMATE AND SHOULD BE CONSIDERED
 ILLUSTRATIVE ONLY.

915 sq ft + 915 sq ft
 BELOW GRADE

The following is a disclaimer regarding the approximate nature of dimensions and floor areas listed in this document:

Disclaimer:

The dimensions and floor areas listed in this document are provided as an estimate only and are intended to be used for illustration purposes only. These measurements are not necessarily meant to be a perfect representation of the actual space.

Notes regarding measurement methods and accuracy:

The utilization of laser measurement technology during the 3D model capturing process at the location provides an accurate representation of floor plans, with a typical margin of error of 3-5%. For the most accurate and official measurement data, it is advised to consult official documents such as MPAC records, builder's pre-construction plans, or data from certified measurement companies.

Exterior wall thickness is included in the calculation of the overall square footage and is considered as a component of the footprint. The wall thickness measurement is obtained onsite whenever possible, or estimated in the event where obtaining onsite measurements is not possible, such as in the case of condominium buildings where wall thickness may vary throughout the building.