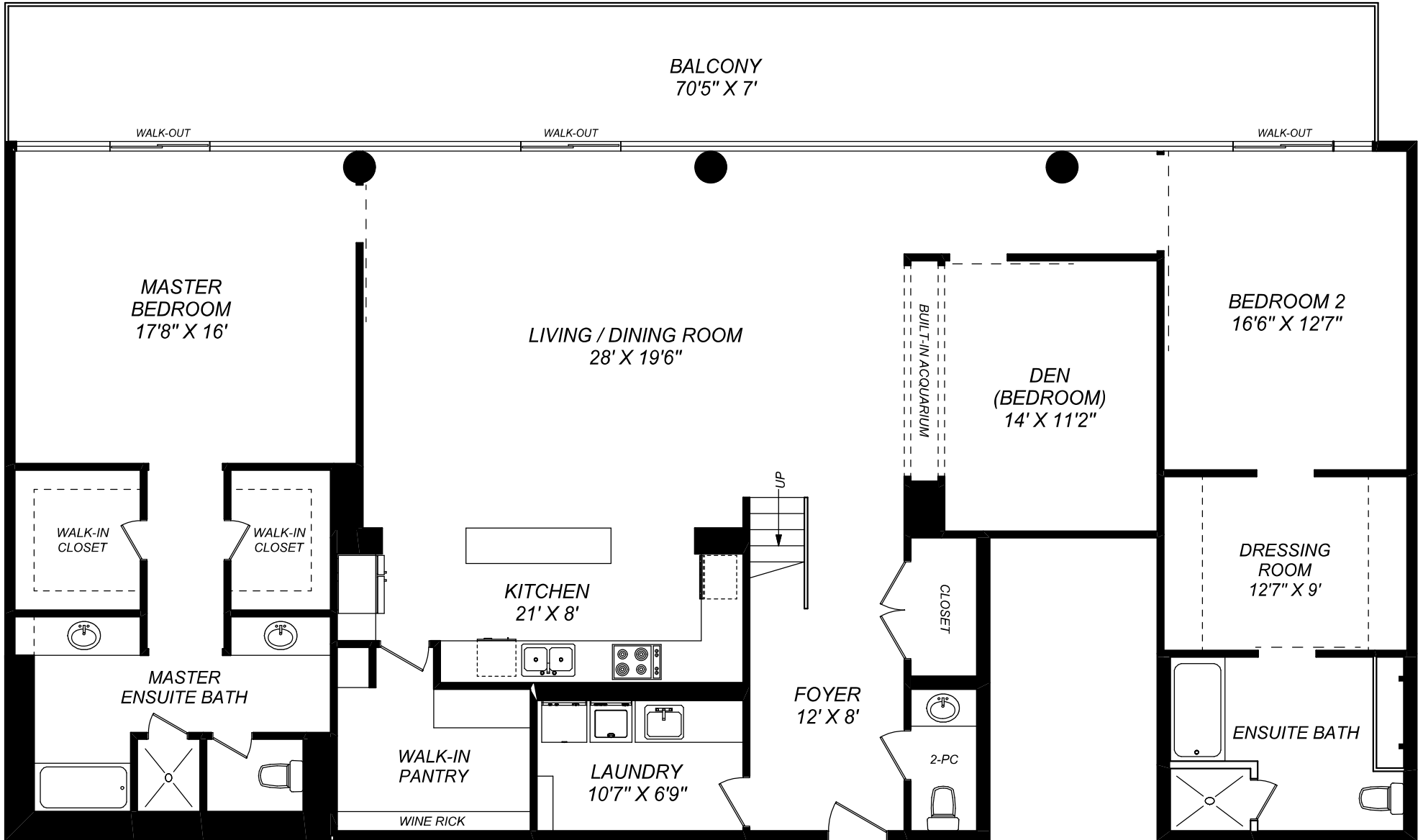


478 KING STREET WEST - SUITE PH2



**MAIN LEVEL**  
**2512 SQUARE FEET**  
(CEILING HEIGHT : 11'-0")



**truPlan**

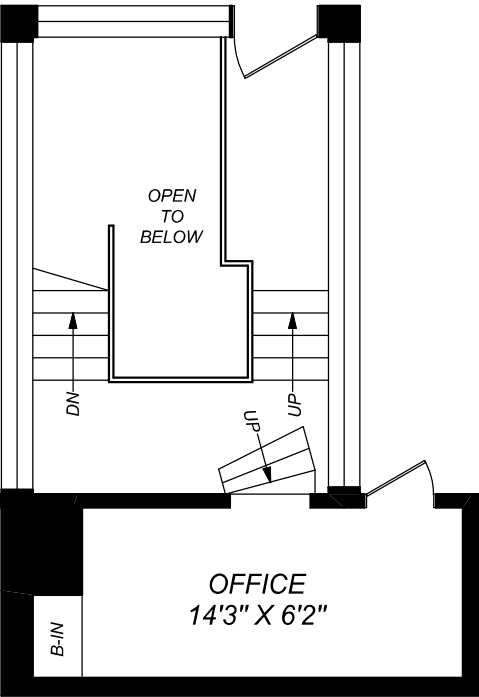
416 573 2096

E & O.E.

Floor plan may not be 100% accurate.

478 KING STREET WEST - SUITE PH2

ROOF TOP TERRACE  
70'7" X 31'8"



UPPER LEVEL  
287 SQUARE FEET



truPlan

416 573 2096

E & O.E.

Floor plan may not be 100% accurate.

METRIC CONVERSION FOR ROOM MEASUREMENTS

478 King St W-PH2

<b>MAIN LEVEL</b>	<b>FEET</b>	<b>INCHES</b>	<b>METRES</b>		
LIVING / DINING	28	0	8.53		
	19	6	5.94		
KITCHEN	21	0	6.40		
	8	0	2.44		
MASTER BEDROOM	17	8	5.38		
	16	0	4.88		
BEDROOM 2	16	6	5.03		
	12	7	3.84		
DEN	14	0	4.27		
	11	2	3.40		
FOYER	12	0	3.66		
	8	0	2.44		
LAUNDRY	10	7	3.23		
	6	9	2.06		
<b>UPPER LEVEL</b>					
OFFICE	14	3	4.34		
	6	2	1.88		